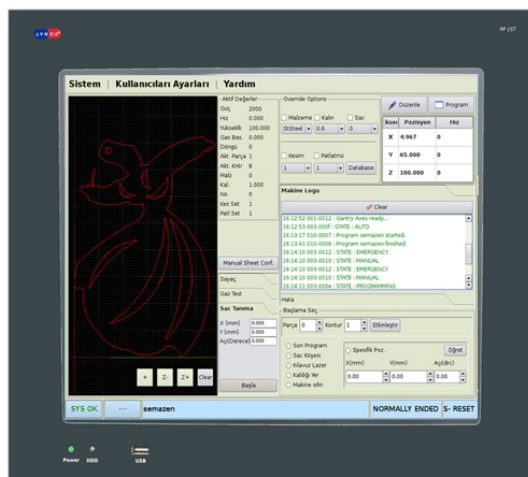


ADVANCED CNC CONTROL SOLUTIONS FOR LASER CUTTING MACHINES

PP 15T CNC UNIT	PP 19T CNC UNIT
15" industrial grade LED TFT colour (1024 x 768 pixels)	19" industrial grade LED TFT colour (1280 x 1024 pixels)
Resistive Touch screen	Resistive Touch screen
Industrial grade motherboard with Intel Pentium® 1.6GHz or higher CPU	Industrial grade motherboard with Intel Pentium® 1.6GHz or higher CPU
320 GB HDD (SSD or CF optional) / 1 GB RAM	320 GB HDD (SSD or CF optional) / 2 GB RAM
1 x Front USB port / 4 x Rear USB port	1 x Front USB port / 4 x Rear USB port
2 x RJ45 Ethernet 10/100/1000MHz	2 x RJ45 Ethernet 10/100/1000MHz
2 x PCI CAN bus port (optional)	2 x PCI CAN bus port (optional)
External mouse and keyboard connection (USB or PS2)	External mouse and keyboard connection (USB or PS2)
24V DC power supply (Industrial grade 220V optional)	24V DC power supply (Industrial grade 220V optional)
40W power consumption (with full load)	60W power consumption (with full load)
0 °C - +50 °C operation temperature range	0 °C - +50 °C operation temperature range
Dimensions (mm): 326 x 404 x 126.5	Dimensions (mm): 405 x 492 x 152.5
Weight (g): 5500	Weight (g): 7500



TT80 Membrane Switch Keyboard

Membrane switch panel with 80 keys & 48 LEDs including

- Dimensions (mm): 171 x 404 x 45.5
- Weight (g): 1700
- Manual Automatic Programming mode keys
- Single-Block mode key
- Numeric Pad
- Initialisation key
- Program Reset-Start-Stop Keys

Free function keys and LEDs

- 48 x free function keys with LED
- 5 Favourite programs keys
- Program List key
- Working in test mode
- Go to loading position key
- Manual jog/step modes
- Manual + / - Motion keys
- Manual Step Keys (1,10,100...)

Physical I/O's on the back plane

- 8 x local 24VDC digital input
- 8 x local 24VDC digital output

BP10 Button Board

- Dimensions (mm): 80 x 404
- Speed % switch node
- Emergency Stop button (optional)
- 8 x external light/buttons and labels (optional)

Supported Axis Types

- Electrical AC servo
- Pneumatic axis (analogue or digital)



Axis Interfaces

- X (can be two axis as X_1-X_2) / Y / Z table axis drive interface with CANopen/Ethernet,
- External feeder/loader/unloader axis control

Interpolation

- Linear
- 2D circular
- Gantry axis
- Contour to contour motion options
- Kinematic interpolation (User defined)

Software Features

- Sheet recognition (Auto/Manual)
- Automatic sheet loading
- Kerf calculation
- Automatic distance sensor calibration
- Automatic resume from last position after failures
- Manual cut of remnant parts
- Workspace transformation
- Online trajectory generation with acceleration jerk limitation
- Technology database interface
- Technology database override options

Malzeme	Kalınlık		Sac											
	Çap(Ø)	Yükseklik(mm)	Hölmeli	Öz	Boşluk(Bari)	Çis Ölcü(Ø)	Çis Yüksekliği	Lens	Nüclü	Ötek	İşlenim	Dev		
Kesim1	2000	1.2	40000	0	2.5	1000	1000	125	1	0	0	0		
Kesim2	1700	1.2	14000	0	2.2	1000	1000	125	1	-3	0	0		
Kesim3	1000	5.5	8000	0	3	1000	1000	150	1	1	1	0		
Kesim4	1000	0.3	8000	0	3	1000	1000	150	1	1	1	0		
Makulama	500	4	5000	0	3	1000	1000	150	1	1	1	0		

Yükseklik	ProgramNo	Öz	Başlangıç(Bari)	Öz Zamanı	İzlenim	Durum	Faaliyet	Lens	Nüclü	Ötek	Tanımlama Zamanı
5.5	1	0	0.9	10	0.5	1	1	1	1	1	1
5.5	1	0	0.9	10	1	1	1	1	1	1	1
5.5	1	0	0.9	10	1	1	1	1	1	1	1
5.5	1	0	0.9	10	1	1	1	1	1	1	1

Haçet Tipi	Min. Çekil. Mes.	Min. Yüksek Geçme Ms	Küçük çekim mes.	Büyük çekim mes.	Head dis. at the end
Rectangle	15	100	20	50	10

Intelligent UPS and Power Failure Support

- Direct interface with UPS, automatic shut-down (option)

General Properties

- Unlimited program size
- ISO G codes editor with parallel cycles support
- Built-in CODE debugger with break-points
- Built-in PLC editor in C language (optional)
- HMI library for customization (optional)
- Secure login and user management with user levels
- Message journal
- Multi language support
- Folder management for parts and tools
- Advanced search facilities
- Favourite program lists
- Integrated scope
- Flexible I/O signal configuration
- Advanced online help

Sistem | **Kullanıcıları Ayarları** | **Yardım**

Aktif Değerler
 Güç: 2000
 Hz: 0.0000
 Yükseklik: 100.000
 Gas Bas: 0.000
 Dangu: 0
 Akt. Parça: 1
 Akt. Krtr: 8
 Malz: 0
 Kal: 1.000
 No: 0
 Kes Set: 1
 Patl Set: 1

Manual Sheet Conf.
 Sayaç: _____
 Gaz Test: _____

Sac Tanıma
 X (mm): 0.000
 Y (mm): 0.000
 Aç(Derece): 0.000

Override Options
 Malzeme Kalın Sac
 StSteel: 0.0 | 0 | 0
 Kesim Patlatma
 1 | 1 | Database

Makine Logu
 Clear
 16:12:52 001-0012 : Gantry Axes ready..
 16:12:53 003-000f : STATE : AUTO
 16:13:17 010-0007 : Program semazen started.
 16:13:41 010-0006 : Program semazen finished.
 16:14:10 003-0012 : STATE : EMERGENCY
 16:14:10 003-0010 : STATE : MANUAL
 16:14:10 003-0012 : STATE : EMERGENCY
 16:14:10 003-0010 : STATE : MANUAL
 16:14:11 003-000e : STATE : PROGRAMMING

Parça 0 | **Kontur** 1 | **Etkinleştir**

Son Program
 Sac Köşesi
 Kılavuz Lazer
 Kaldırıcılar
 Makine sıfır

Spesifik Poz.
 X(mm) | Y(mm) | Aç(drc)
 0.00 | 0.00 | 0.00

SYS OK | **semazen** | **NORMALLY ENDED** | **S- RESET**